

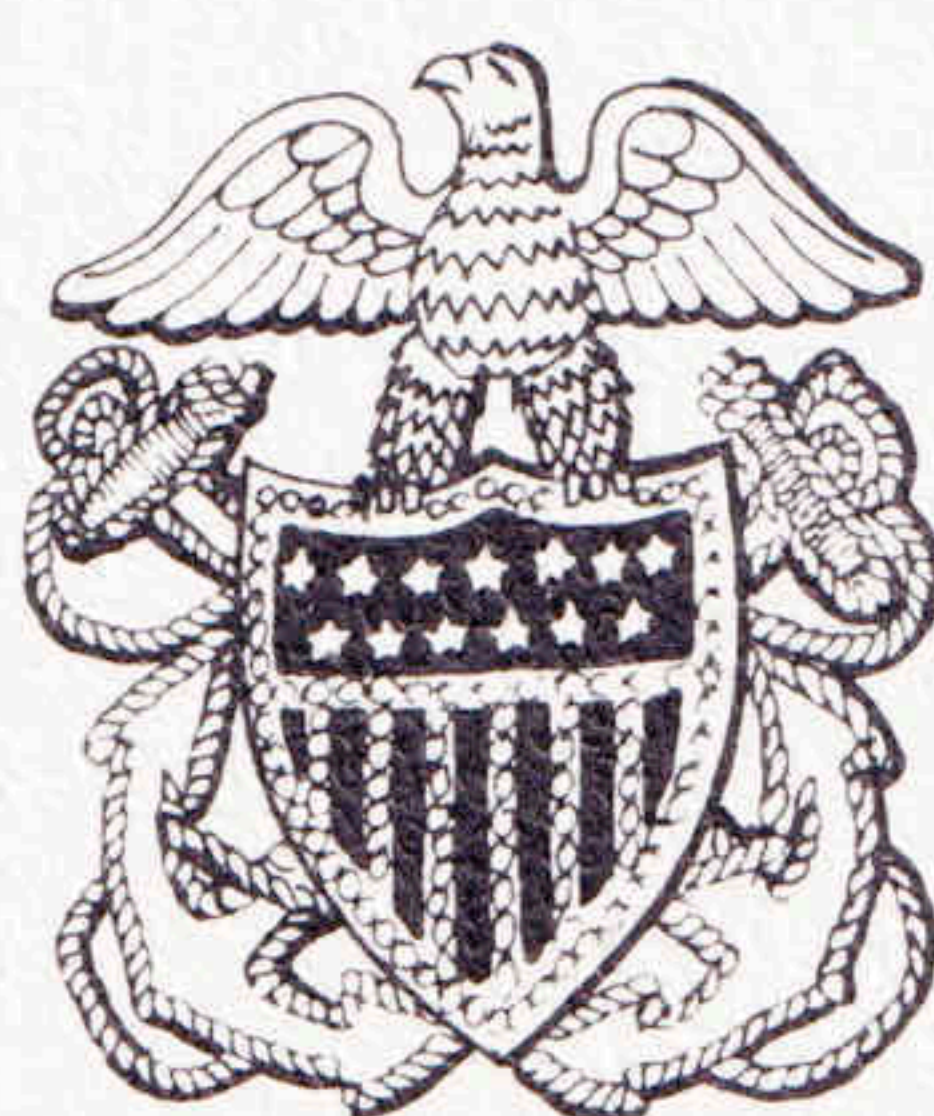


**U.S. ATLANTIC FLEET**

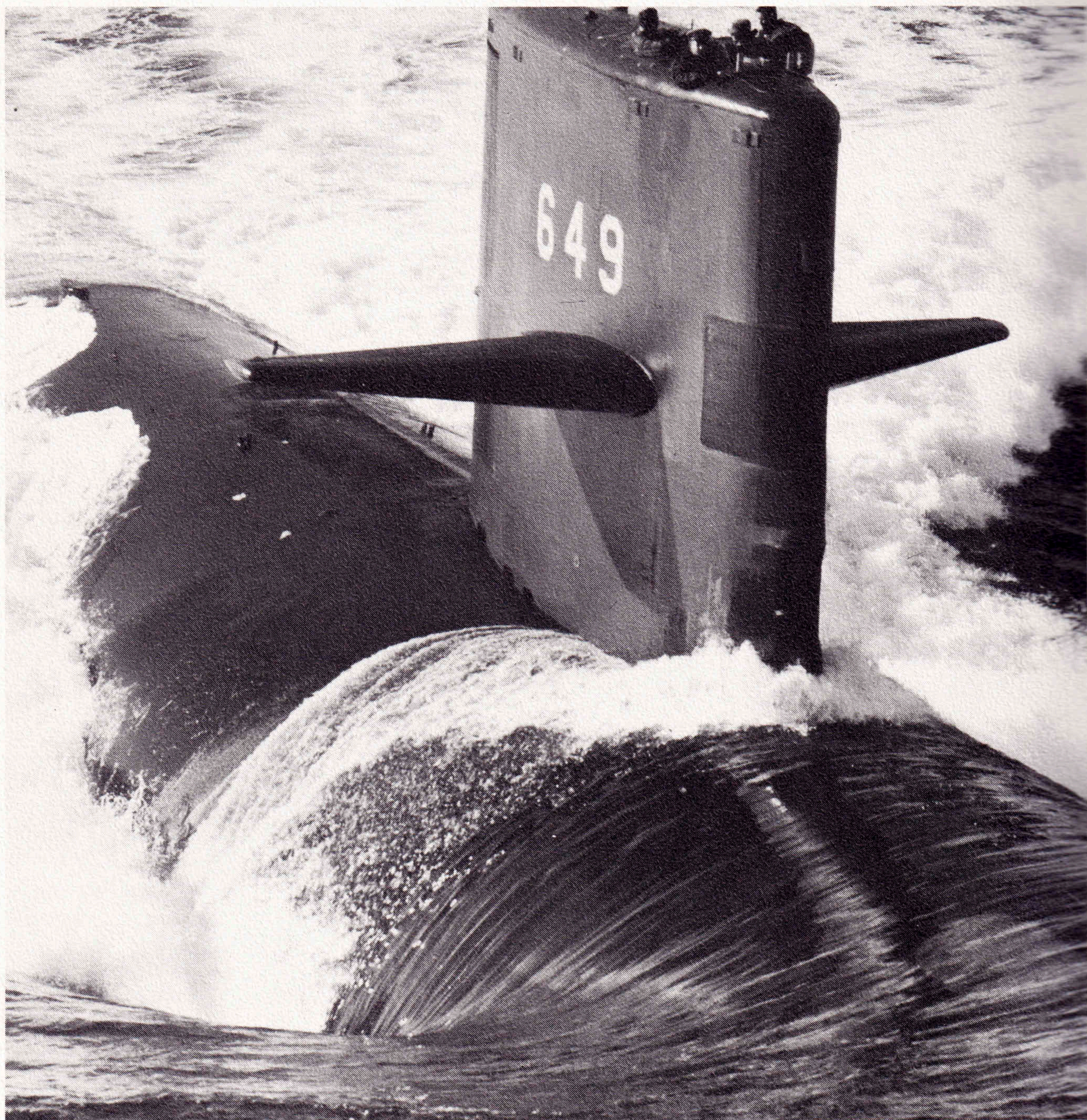












THE ATTACK SUBMARINE  
USS SUNFISH (SSN 649)



# USS SUNFISH (SSN 649)

## VITAL STATISTICS

Built by  
General Dynamics Corporation  
Quincy Division

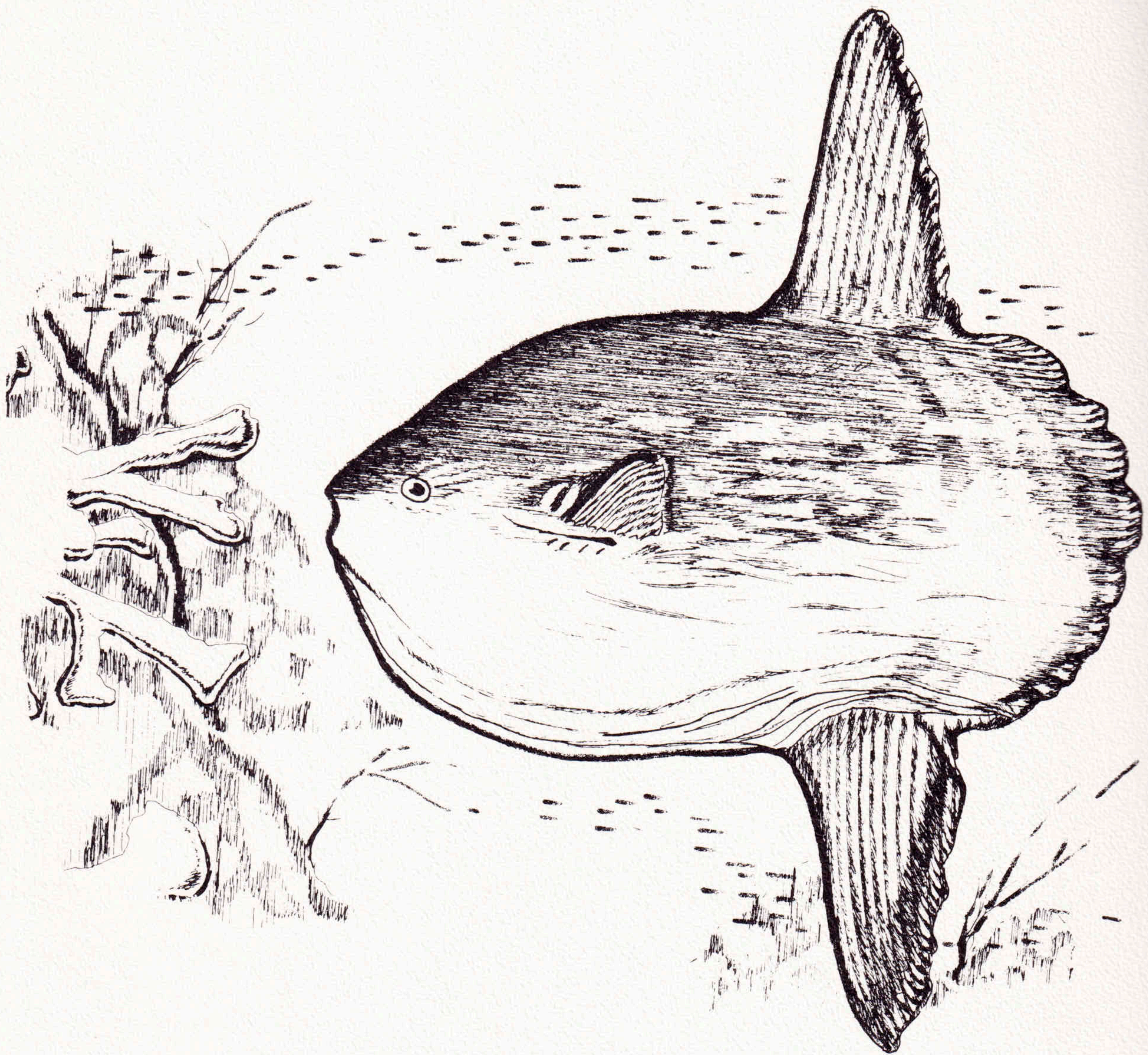
Keel Laid	15 January 1965
Launched	14 October 1966
Sponsored By	Mrs. Robert C. Byrd
Length	292 Feet
Beam	32 Feet
Displacement Surfaced	4060 Tons
Speed	Over 20 Knots
Diving Depth	Over 400 Feet
Assignment	Submarine Squadron Four, Charleston, South Carolina

Commanding Officer

Commander Richard L. Thompson USN

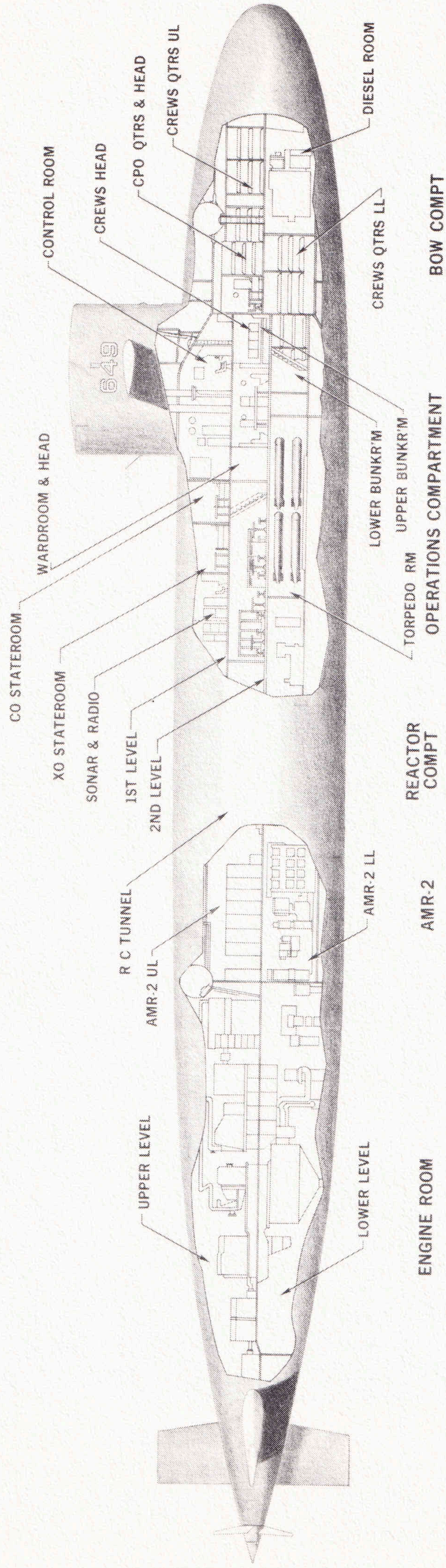


# THE OCEAN SUNFISH OR MOLA MOLA



The Ocean Sunfish, unlike its little, fresh water namesake is a giant-sized fish of warm open seas. This remarkable marine fish (Mola Mola) of the order Plectognath has a deep body truncated behind, high dorsal and oval fins, and a short fringe like caudal fin. The mouth is small with a horny beak and the leathery skins toughness is almost matched by the toughness of the flesh. It appears to be all head, hence is also called Headfish. It is related to the puffers and porcupine fishes. Known to reach a length of 11 feet and a weight of 2,000 pounds (averaging less than half this size) these great fish may be found near the surface of nearly all warm and temperate seas.

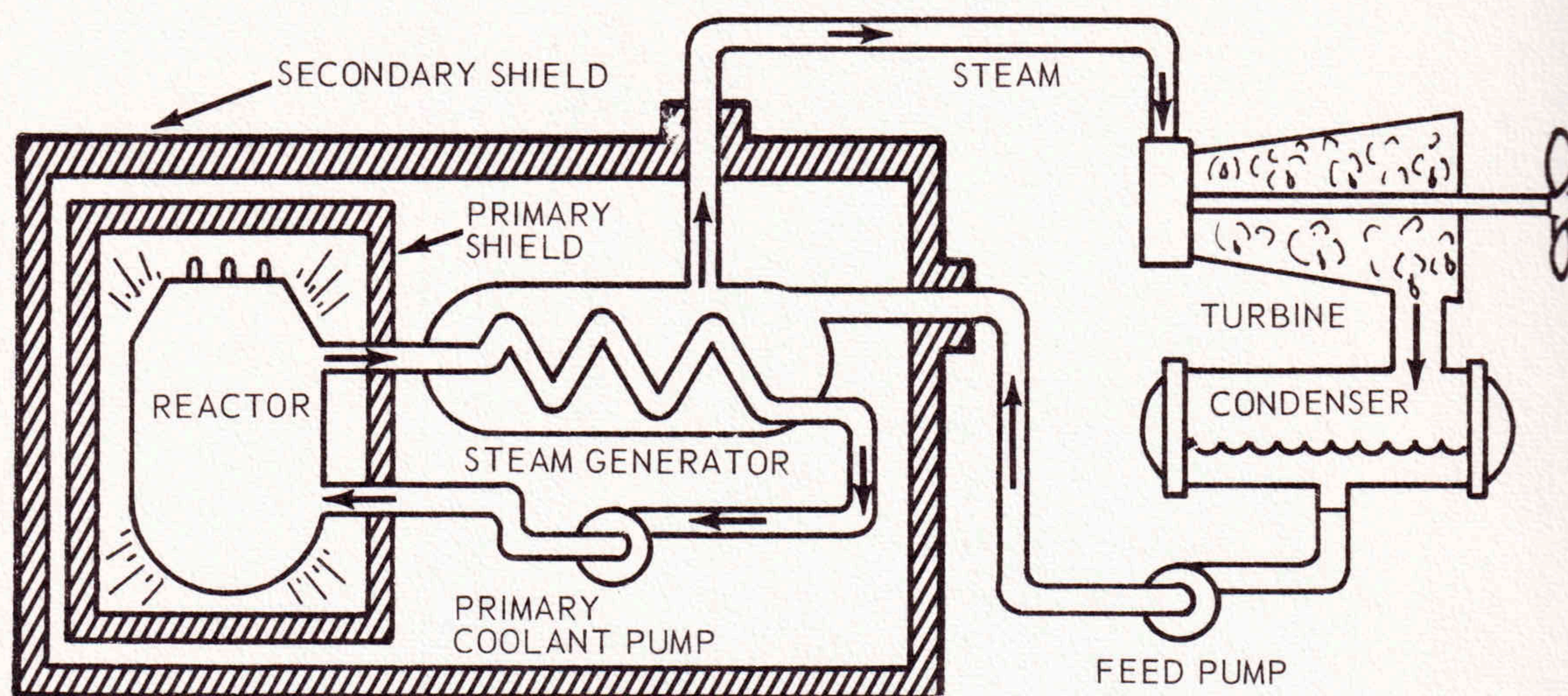




# SHIP'S DIAGRAM



# THE POWER PLANT



The power plant of a nuclear submarine is based upon a nuclear reactor which provides heat for the generation of steam. This, in turn, drives the main propulsion turbines and the ship's turbo-generators for electric power.

The primary system is a circulating water cycle and consists of the reactor, loops of piping, primary coolant pumps and steam generators. Heat produced in the reactor by nuclear fission is transferred to the circulating primary coolant water which is pressurized to prevent boiling. This water is then pumped through the steam generator and back into the reactor by the primary coolant pumps for reheating in the next cycle.

In the steam generator, the heat of the pressurized water is transferred to a secondary system to boil water into steam. This secondary system is isolated from the primary system.

From the steam generators, steam flows to the engine room where it drives the turbo-generators, which supply the ship with electricity, and the main propulsion turbines, which drive the propeller. After passing through the turbines, the steam is condensed and the water is fed back to the steam generators by the feed pumps.

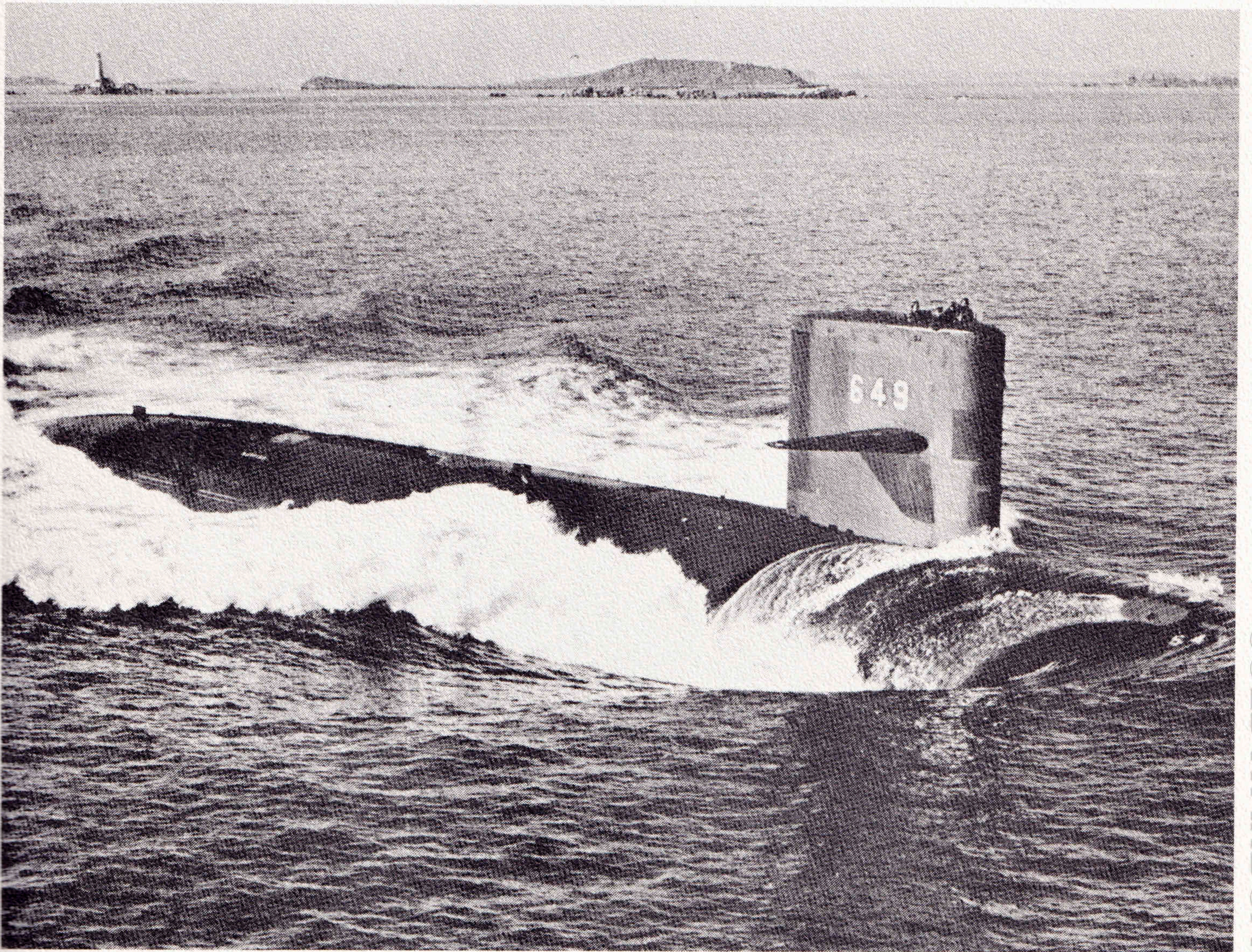
There is no step in the generation of this power which requires the presence of air or oxygen. This fact alone allows the ship to operate completely independent from the earth's atmosphere for extended periods of time.

During the operation of the nuclear power plant, high levels of radiation exist around the reactor and personnel are not permitted to enter the reactor compartment. Heavy shielding protects the crew so that the crew member receives less radiation on submerged patrol than he would receive from natural sources ashore.



## SHIP'S MISSION

SUNFISH (SSN 649) is a nuclear-powered attack submarine of the "STURGEON Class", especially designed as an anti-submarine weapon. She combines the endurance and environmental independence of nuclear power with deep submergence and high speed. These capabilities, coupled with the latest in submarine weapons systems, including nuclear-tipped and rocket-propelled torpedoes, make SUNFISH one of the Navy's most effective anti-submarine weapons. Super-quiet, deep-diving, and swift, SUNFISH is also very lethal to hostile surface shipping. But she is especially suited as a "killer submarine" vitally concerned with denying the effectiveness of a hostile underseas fleet.



USS SUNFISH AT SEA



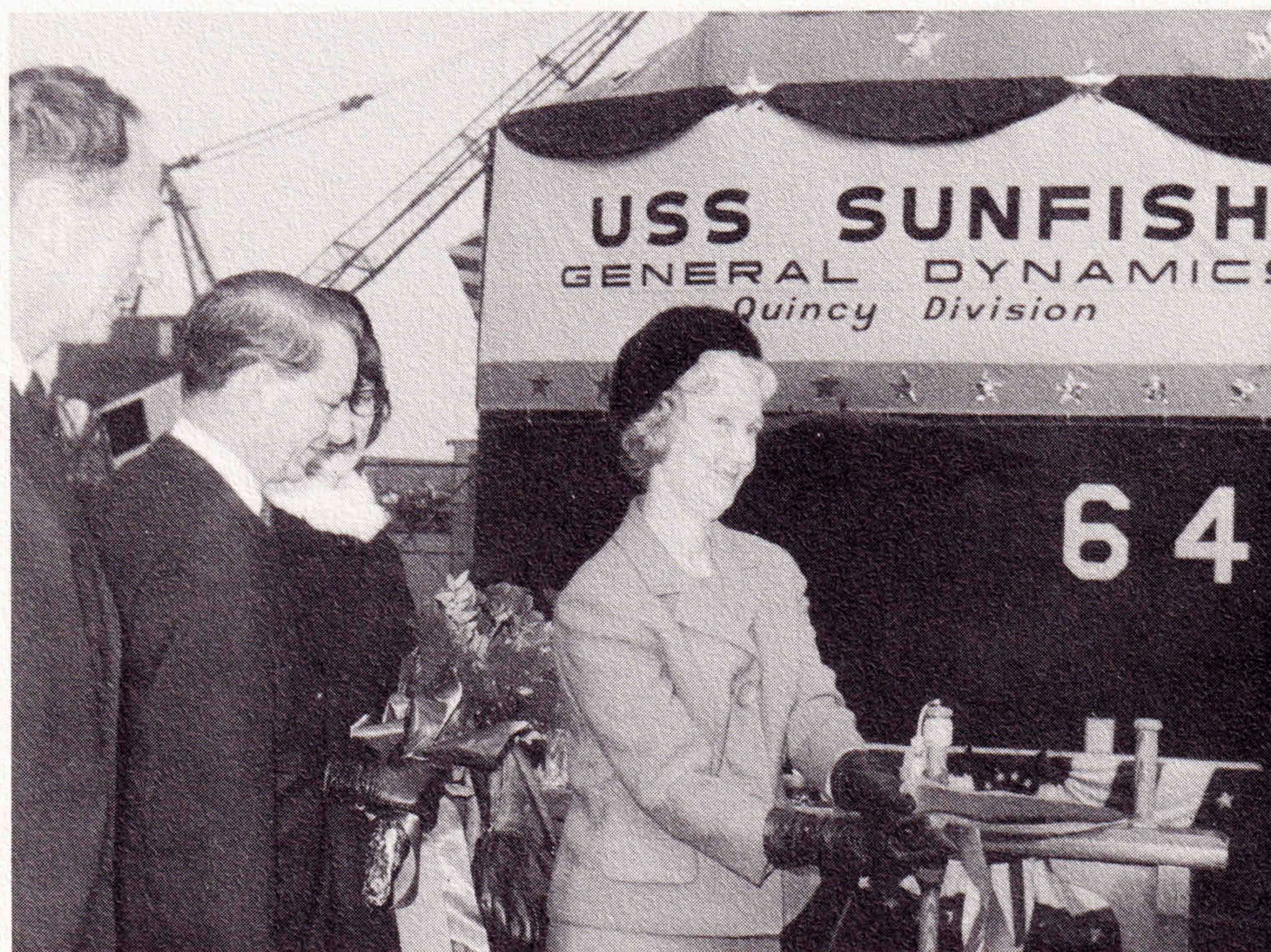
# KEEL LAYING OF USS SUNFISH



Mrs. Rebecca M. Jackson of Groton, Conn., wife of Capt. Harry A. Jackson, Navy Supervisor of Shipbuilding at Groton, welded her initials on the keel plate set down to mark formal start of construction on the Sunfish.

Attending the ceremony on January 15, 1965 were Capt. Jackson; J. William Jones, Jr., Electric Boat president; and Robert V. Laney, General Manager of the Quincy Division.

# CHRISTENING OF USS SUNFISH



**SPONSOR** — Mrs. Robert C. Byrd stands ready to pull lanyard which broke champagne bottle against USS SUNFISH at christening ceremony (October 14, 1966) at the Quincy, Mass., division of General Dynamics. Watching are Roger Lewis, president of General Dynamics, Senator Byrd, and Mrs. John Moore, the Byrd's daughter and matron-of-honor at the ceremonies.



# Commissioning of a Navy Ship

The commissioning ceremony marks the acceptance of a ship as a unit of the Operating Forces of the United States Navy. At the moment of breaking the commissioning pennant, USS SUNFISH (SSN 649) becomes the responsibility of the Commanding Officer who, together with the ship's officers and men, has the duty of making and keeping her ready for any service required by our nation in peace or war.



The commissioning pennant is believed to date from the 17th century, when the Dutch were at war with the English. The Dutch Admiral TROMP hoisted a broom at his masthead to indicate his intention to sweep the English from the sea. This gesture was answered by the English admiral who hoisted a horse whip, indicating his intention to chastise the Dutch. The English were victorious and ever since, the narrow coach whip pennant (symbolizing the original horse whip) has been adopted by all nations as the distinctive mark of a ship of war.





JOHN H. CHAFEE  
SECRETARY OF THE NAVY





THE SECRETARY OF THE NAVY  
WASHINGTON

14 March 1969

Commander Richard L. Thompson, USN  
PCO, SUNFISH (SSN-649)  
General Dynamics  
Quincy Division  
Quincy, Massachusetts 02169

Dear Captain:

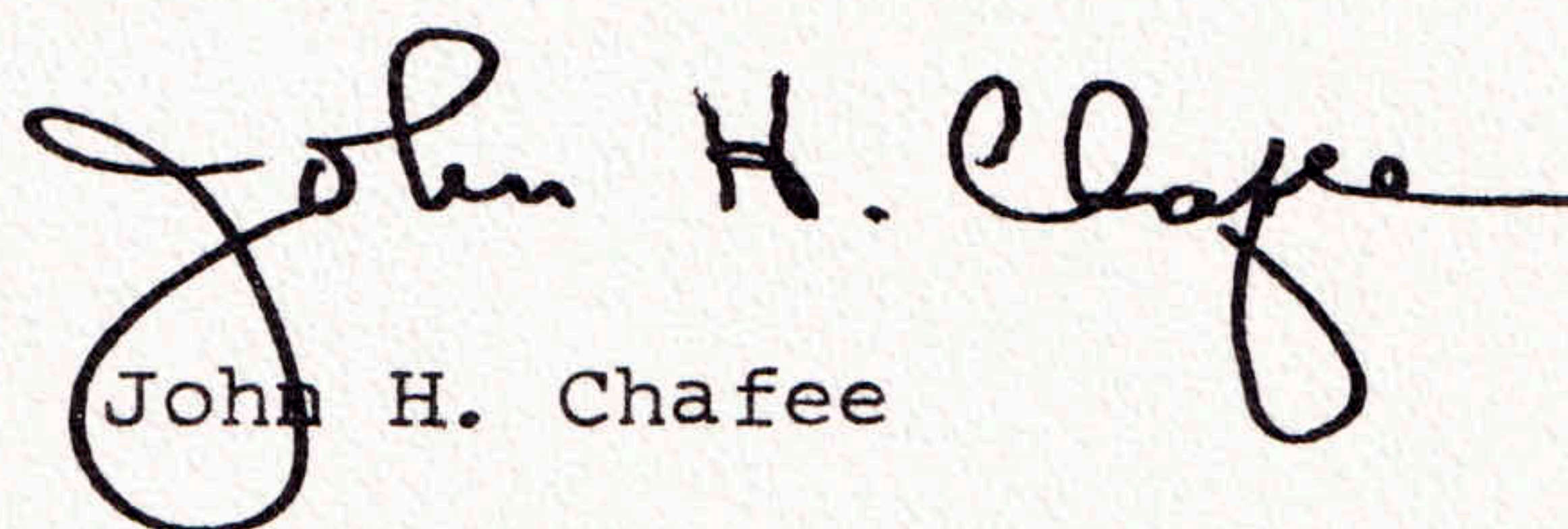
Congratulations on your new command, and best wishes to you and your crew on the commissioning of SUNFISH (SSN-649).

It is your privilege to command one of the finest ships of our new undersea Navy. SUNFISH embodies the best thought and effort of American designers and craftsmen. Her propulsion system, weapons, and undersea navigation and detection equipment have been carefully designed and engineered to make her a truly formidable guardian of America's security and peace.

As a veteran submariner, you of course know that the finest technical advances mean little unless they are given life by the devoted effort and ingenuity of truly dedicated officers and men. A ship, Admiral Arleigh Burke reminded us, is "good because of the people in her. Without them she is an inert mass of steel."

I am sure that, under your guidance and through the faithful leadership of your officers and petty officers, SUNFISH will take her rightful place in the first line of our country's defenses. To you and to each man of your crew I wish every good fortune in the voyage ahead.

Sincerely yours,

  
John H. Chafee





# UNITED STATES SHIP

Commissioning



## BAND SELECTIONS

the First Naval District Band

## INVOCATION

Chaplain James E. Cronin, Lieutenant Commander, USNR

## WELCOMING REMARKS AND INTRODUCTION OF DISTINGUISHED GUESTS

Captain John M. Duke, Jr., USN  
Supervisor of Shipbuilding, Conversion and Repair, USN  
Quincy

## ACCEPTANCE OF SHIP

from General Dynamics Corporation, Quincy, Mass.  
by Captain John M. Duke, Jr.

## REMARKS BY GENERAL MANAGER, QUINCY DIVISION OF GENERAL DYNAMICS

Robert V. Laney  
Vice President, General Dynamics  
General Manager, Quincy Division

## INTRODUCTION OF REAR ADMIRAL W. C. HUSHING, USN

COMMANDER PORTSMOUTH NAVAL SHIPYARD  
REPRESENTING THE FIRST NAVAL DISTRICT

Captain John M. Duke

## REMARKS AND INTRODUCTION OF PRINCIPAL SPEAKER

by Rear Admiral W. C. Hushing

COLDWARREBOATDOORG



The Ship will be open for  
of the Office





P SUNFISH (SSN 649)

g Ceremony



ADDRESS BY THE PRINCIPAL SPEAKER

Mayor James R. McIntyre  
Mayor of the City of Quincy and  
Massachusetts State Senator

READING OF NAVY DEPARTMENT ORDERS TO  
COMMISSION SHIP

Rear Admiral W. C. Hushing

ENSIGN, JACK, AND COMMISSIONING PENNANT  
ARE RAISED ON SHIP AS THE BAND PLAYS  
NATIONAL ANTHEM

The Ship is now in Commission

READING OF COMMANDING OFFICER'S ORDERS

Commander Richard L. Thompson, USN,  
Commanding Officer

COMMANDING OFFICER ASSUMES COMMAND

FIRST WATCH IS SET BY EXECUTIVE OFFICER

BAND PLAYS RUFFLES AND FLOURISHES,  
AND ANCHORS AWEIGH

REMARKS BY THE COMMANDING OFFICER

Commander Richard L. Thompson

BENEDICTION

Chaplain James E. Cronin



visiting after the departure  
cial Party.



# PRINCIPAL SPEAKER



State Senator and Mayor of Quincy, Mass. James R. McIntyre, was born in Quincy, Massachusetts, May 25, 1930 — graduated from College of the Holy Cross (received NROTC Scholarship, A.B. cum laude in English — 1951) Harvard Law School (L.L.B. 1956 (1957) ): Boston University (M.A. in Political Science 1960); Graduate Assistant — Boston University 1959; Harvard Summer School (Economics — 1954).

June 1951-September 1953; Commissioned 2nd Lieutenant, USMC — served in Korea; awarded Bronze Star w/v, Purple Heart with two clusters, Korean Service Medal with 3 stars, Korean Presidential Letter of Appreciation, discharged from active duty as 1st Lieutenant — discharged from USMC Reserve as Captain.

City Councillor, City of Quincy 1956-1959 (two terms), unanimously elected President of the City Council in 1958 and 1959. Massachusetts House of Representatives 1959-1964 (three terms). While member of House served as Vice Chairman of Constitutional Law Committee, member of Transportation Committee, Power and Light Committee. Served as member of Special Recess Commission on Transportation. Elected to the Massachusetts Senate — 1965\*. Chairman, Transportation and Military Affairs Committees; member of the Civil Service and Water Supply and Resources Committees. Elected Mayor of the City of Quincy, 1966\*\*.

United Cerebral Palsy-State Legislative Chairman, 1962-1963, Vice President U.C.P. 1964-1965-1966; Quincy Red Cross — Chairman 1958-1959; Board of Directors — 1959 to date Norfolk County Heart Fund — Board of Directors 1962-1963; Norfolk County March of Dimes — Board of Directors 1964.

Member — Mass. Bar Association, Member — Federal Bar; Order of Elks, North Quincy Council K of C; Holy Name Society; V.F.W.; American Legion — Quincy Post #95; Disabled American Veterans; Past Vice-Commander of Quincy Amvets; City Legislative Officer of Quincy Veterans' Council; appeared on "The Christophers" national T.V. program; Selected to be included in the 1965 edition of "Outstanding Young Men of America".

Author of "The City Manager Form of Government: The City of Quincy as a Case Study". Voted one of the Ten Outstanding Young Men of Boston — 1966. Delegate to Democratic National Convention 1960. Alternate Delegate to Democratic National Convention 1964; Delegate to Democratic State Convention 1960 and 1962.

Married to Sheila L. Read, R.N. (Niagara University — B.S. Nursing 1953). They have a daughter Elizabeth Anne, a son William Francis, and twins; Charles and Sheila.

\*Re-elected to the Massachusetts Senate — 1967, 1969.

\*\*Re-elected Mayor of the City of Quincy — 1968.



# HISTORY OF USS SUNFISH

## SS 281

The first SUNFISH (SS 281) was commissioned 15 July 1942. She had a length overall of 311' 10"; extreme beam, 27' 4"; standard displacement, 1526 tons; mean draft, 15' 3"; submerged displacement, 2424 tons; designed depth, 300'; designed surfaced speed of 20.25 knots; designed submerged speed 8.25 knots.

SUNFISH put to sea from Pearl Harbor 23 November 1942 on her first war patrol. She laid a minefield at the entrance to Ise no Imi. But found targets submarine-shy. On her second war patrol in the Formosa-Van Dieman-Nagasaki routes, she was depth charged but managed to sink the 3,262-ton cargo ship KOSEI MARU in the approaches to Toro Shima.

SUNFISH's third war patrol was uneventful. But on her fourth war patrol off Formosa she left a tanker down by the stern and witnessed another explode into flames 200' high. She destroyed the 4,180 ton cargo ship KOZAN MARU. And then suffered 40 depth charges by two fast running OTORI'S.

SUNFISH spent her fifth war patrol without finding one worthy target. Her sixth war patrol in waters off the Caroline and Marianas Islands spelled doom for the 5,354-ton cargo ship SHINYUBARI MARU and the 4,083 cargo ship KUNISHIMA MARU.

On SUNFISH's seventh war patrol she sank the 2,577-ton passenger-cargo ship SHENMEI MARU; and the 6,284-ton cargo ship TAIHEI MARU. On her eighth war patrol she sank the 4,701-ton tanker CHI-HAYA MARU coming out of the Tsushima Straits. And the 6,435-ton cargo ship ETASHIMA MARU.

SUNFISH returned to the Yellow Sea for her ninth war patrol as one of "Underwood's Urchins". She sank the 6,968-ton cargo ship EDOGAWA MARU and the passenger-freighter SEISHO MARU (5,463-tons). And the 3,748-ton transport DAIREN MARU.

SUNFISH had to terminate her tenth war patrol because of a collision with an unsighted ice-floe that bent both periscopes, and prevented their further use. On her eleventh war patrol SUNFISH, in daring daylight attacks, sunk the 1,620-ton cargo ship MANRYU MARU, and a Frigate of 800-tons. And the 1,093-ton cargo ship KAIHO MARU and the 1,948-ton cargo ship TAISEI MARU.

SUNFISH received the Navy Unit Commendation for outstanding heroism during her ninth and eleventh war patrols . . . "Her intrepidity in action reflects the highest credit upon her skilled and courageous officers and men and upon the United States Naval Service."

SUNFISH was preparing for another war patrol when hostilities ceased with Japan. She was decommissioned at Mare Island on 26 December 1945 and remained in reserve until her name was struck from the Navy List 1 May 1960 and she was sold for scrapping.





COMMANDING OFFICER  
RICHARD L. THOMPSON  
Commander, U. S. Navy



# THE COMMANDING OFFICER

Commander Richard L. Thompson, Commanding Officer of SUNFISH, was born in Beckley, West Virginia, in 1931. He attended West Virginia University and, in July 1950, was appointed a Midshipman at the United States Naval Academy, from which he graduated in 1954 and received his commission as Ensign, U. S. Navy.

Commander Thompson first served aboard the destroyer USS BROWNSON (DD 868). In June 1955, he was assigned to the U. S. Naval Submarine School, and, after completing the course of instruction there, reported to the diesel-electric submarine USS CROAKER (SS 246). Commander Thompson was selected for the Nuclear Power Program in January 1958, and, following thirteen months of nuclear training, he was assigned to the new nuclear submarine SEADRAGON (SSN 584). In his two years aboard SEADRAGON, Commander Thompson performed a wide variety of duties and participated in the first East-West Polar transit and submerged transit of the Northwest Passage. He was then sent to the staff of the U. S. Navy Nuclear Power School at Mare Island, California, as Director of the Enlisted Course of Instruction. Following this two year tour of duty he reported in August, 1963 to the Polaris Missile Submarine, USS THEODORE ROOSEVELT (SSBN 600) and, the following year, received orders to serve as Executive Officer on another Polaris Submarine, USS JAMES K. POLK (SSBN 645). In June 1967, Commander Thompson took command of the SUNFISH Precommissioning Unit at Quincy, Massachusetts.

Commander Thompson is married to the former Natalie Smith of Wabash, Indiana. They have two children, Leslie, born in October 1959 and Stuart, born in March 1962.



# THE EXECUTIVE OFFICER



LCDR James J. Pistotnik is a native of Bedford, Ohio. In 1957 he graduated from the United States Naval Academy and received his commission as Ensign, U.S. Navy.

LCDR Pistotnik first served in the Gunnery Department of the heavy cruiser ROCHESTER (CA 124). He then volunteered for submarine duty in 1959, and, completing submarine training in December of that year, reported for duty aboard the USS VOLADOR (SS 490). In September 1963, LCDR Pistotnik was selected for the Navy's Nuclear Power Program and, after successful completion of an intensive one year training schedule, was assigned to the fast attack nuclear submarine USS SCULPIN (SSN 590). He began his present tour of duty as SUNFISH Executive Officer, in May 1967.

LCDR Pistotnik is married to the former Rosilen Brandt of Manitowoc, Wisconsin. They have two children: Blaise, born in February 1964, and John, born in September 1965.



LCDR James N. Roberts USN  
Engineer Officer



LCDR William P. Houley USN  
Operations Officer



LT Dennis P. Allison USN  
Main Propulsion Assistant



LT Charles P. Johnson USN  
Weapons Officer

LT Daniel J. Koczur USN  
Electrical Officer





LT Gaylord W. Galiher USN  
Sonar Officer



LT James R. Hendricks USN  
Damage Control Assistant

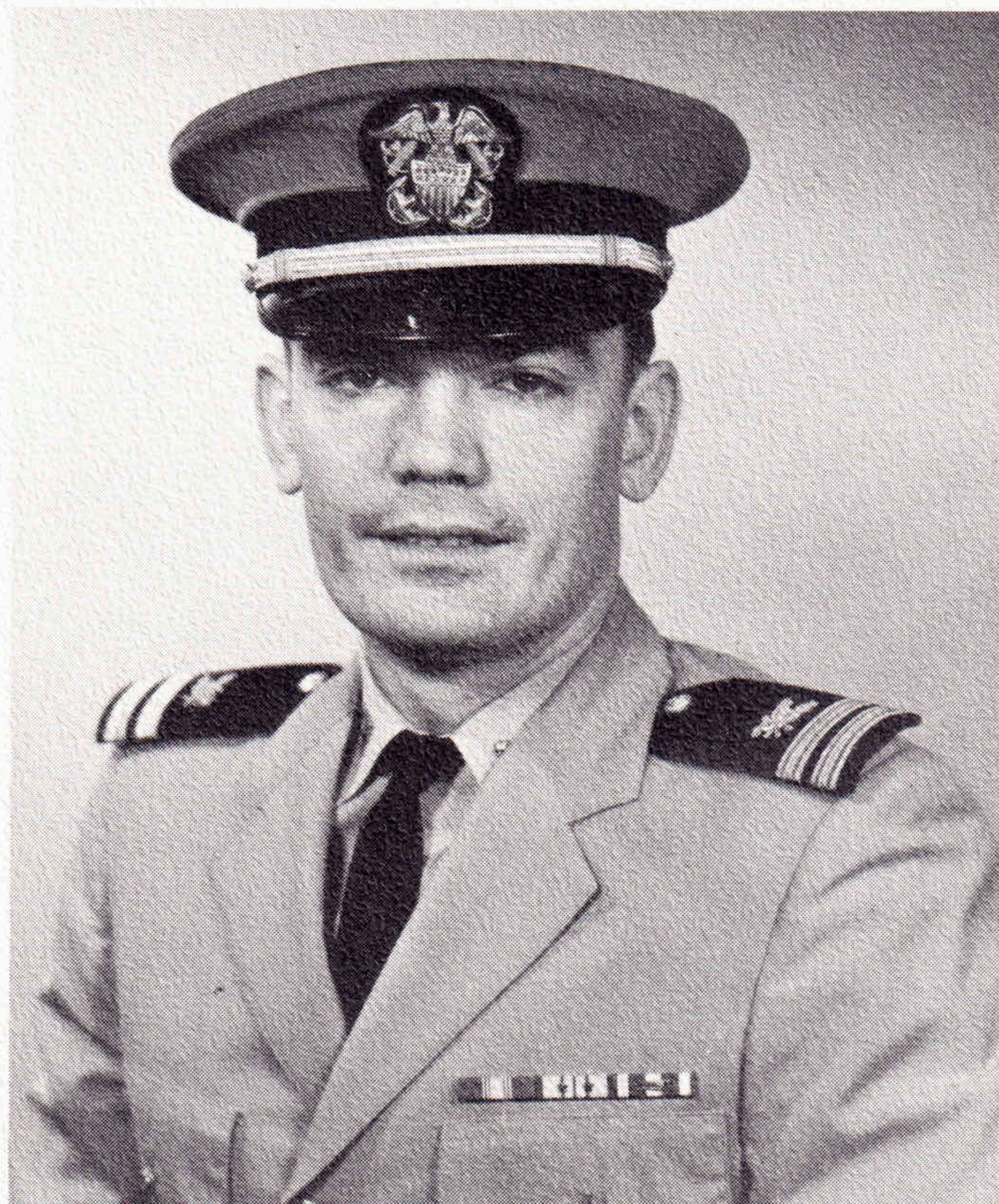
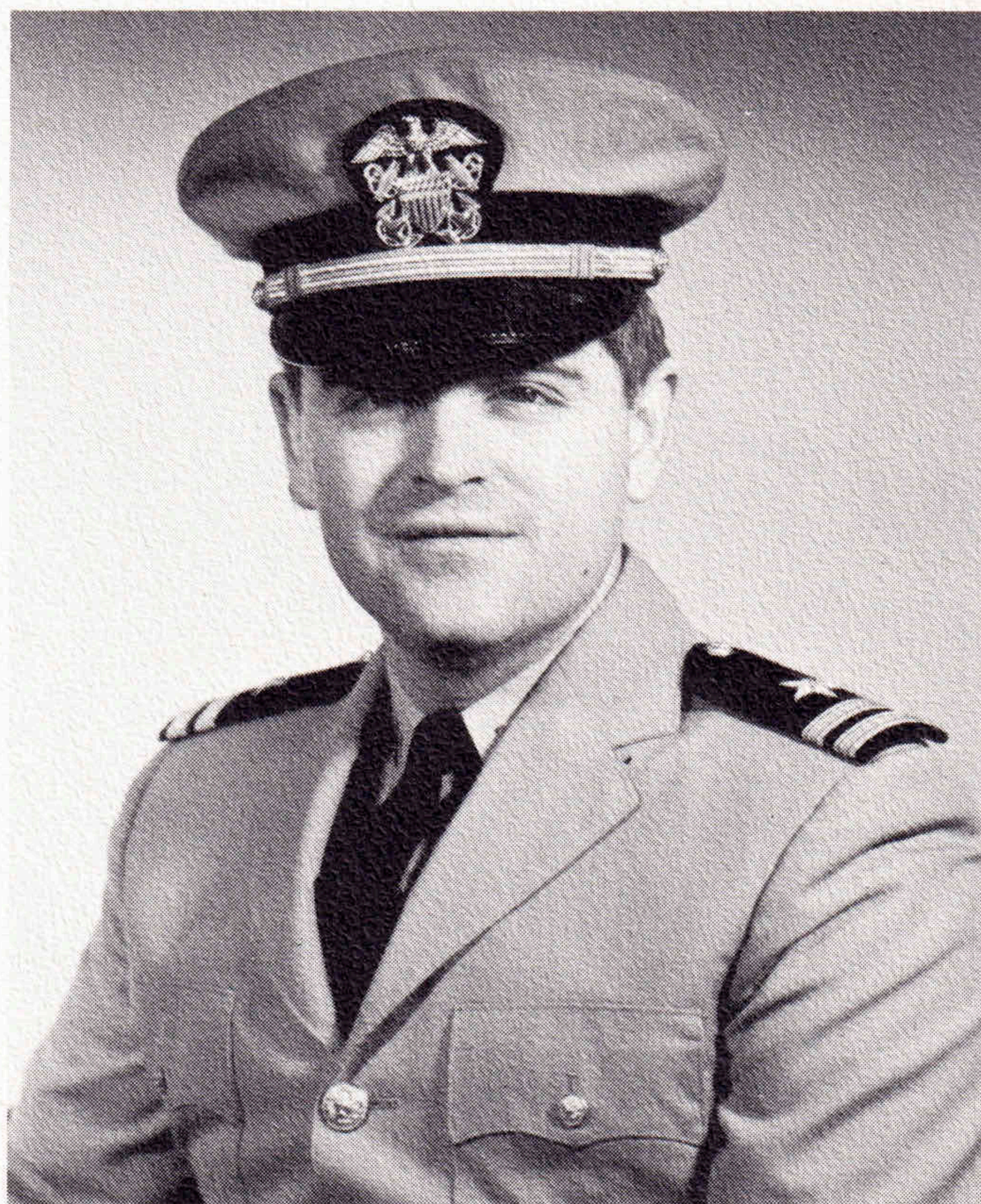


LT John C. DeVine Jr. USN  
Reactor Control Officer





LT A. William Bower III USN  
Communications Officer



LT John T. Kohlmann (SC) USN  
Supply Officer



# CHIEF PETTY OFFICERS

RMCS(SS) John A. Malley

EMCS(SS) Clifford E. Porter

ENCS(SS) Jerry S. Gilstrap

STC(SS) James S. Anderson

EMC(SS) Robert L. Barber

SDC(SS) Curtis Bogan

MMC(SS) Ray A. Bowser

RMC(SS) Thomas W. Britton

QMC(SS) Richard R. Cagle

MMC(SS) Gregory E. Fairbanks

MMC(SS) Donald R. Londergan

STC(SS) Delbert W. Norrington

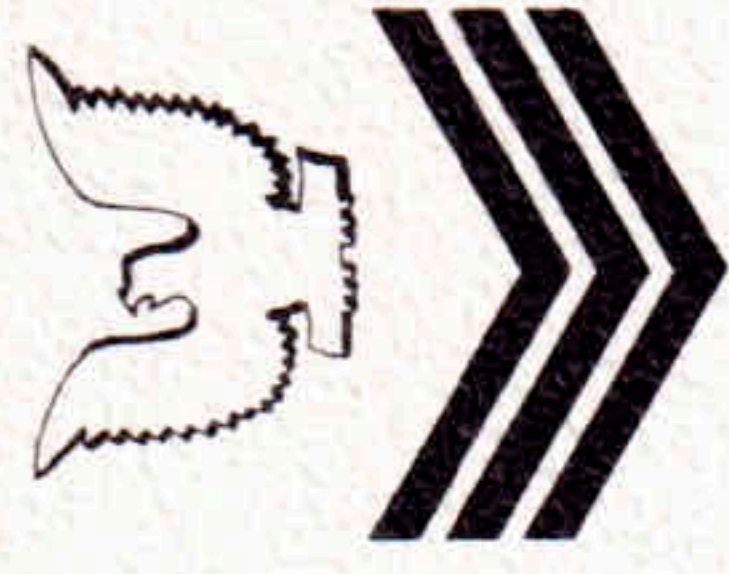
TMC(SS) Stephen D. Parks







## ENLISTED PERSONNEL



ET1(SS) William A. Barr  
MM1(SS) Jimmy D. Buth  
MM2 Ronald V. Campbell  
STSSN J. M. Cascone  
EM2 William J. Chalfant  
IC3 Ronnie W. Childers  
ET1(SS) Craig L. Clark  
MM2(SS) Craig J. Conklin  
FTG1(SS) Joseph S. Cook  
SK3 David R. Corbett  
IC1(SS) William M. Deabenderfer  
MM2 Michael J. Derivan  
EM2(SS) James E. DeVree  
SN Floyd R. Dvorak  
CS1(SS) Rollo D. R. Fischer  
ET1(SS) Larry P. Freeman  
ETR2 Calvin C. Gifford  
SN Edward E. Graham  
MM1(SS) Ray A. Gregory  
MM1(SS) Richard Griffin  
MM2 Michael M. Guenther  
ETR2 John P. Haerle  
ET1(SS) Kenneth E. Hines  
SN Christopher G. Hobson

MM2 Stephen J. Hrdlicka  
STS2(SS) David Huber  
MM1(SS) Kenneth Jacobs  
QMSN Kenneth Jamroz  
IC2(SS) Charles M. Kazemekas  
CS1(SS) Vernon E. Keeney  
MM1(SS) David F. Kenison  
FTG2 Kevin J. Latham  
YN1(SS) Lawrence L. Lehnhoff  
MM2(SS) Robert S. Lenherr  
ETR3 Jack L. Marchant  
MM2(SS) Richard E. Mattson  
IC2 Joseph H. Martin  
MM2(SS) Albert S. McKandless  
TM3 Joseph J. McMahon  
SK1(SS) James N. Meek  
STSSN Karl R. Militzer  
STS3(SS) Peter T. Morgenstern  
MM2 Douglas E. Paquette  
TM2(SS) Billy W. Parks  
IC2(SS) Harold L. Piper  
TM1(SS) Neil W. Posey  
EM1(SS) Stephen A. Reem  
QM3 Joseph A. Robles  
RM3(SS) Peter A. Roiland  
SN Robert Rosand  
QM2(SS) William M. Rutz  
TN Orlando G. Samortin  
ST1(SS) Timothy M. Schmidt  
ET1(SS) Robert S. Schrock  
STS2 Mark W. Simmons  
IC1(SS) James L. Simon  
IC1(SS) Warren L. Sinclair  
MM3 Robert A. Sluss  
HM1 Wayne S. Smith  
MM1(SS) James E. Stevens  
MM1(SS) Wayne L. Swanson  
ETN2(SS) Edward J. Talbot  
MM3 Jerry W. Tant  
ETN3(SS) Robert W. Thomas  
FTG1(SS) Richard L. Thomsen  
TN Rafaelito C. Tojos  
MM3 Stephen E. Trimble  
STSSN Howard F. Waldron  
ET1(SS) Wayne A. Warner  
YNSN Champ C. White  
RM2(SS) William J. Whitney  
SN Alan P. Worth







